

Rectal Thermometer User Manual

Model SV224

1. Overview

The rectal thermometer SV 224 looks like a medicine capsule, with an external slender temperature catheter inserted into the animal's rectum or implanted subcutaneously. The capsule is worn outside the animal's body and dynamically and continuously measures the animal's core body temperature. Smart terminals such as mobile phones monitor and record temperature data in real time. It is widely used for measuring the core body temperature of experimental animals in scientific research in the fields of life medicine, pharmacology, and pathology.

2. Functional characteristics

Capsule size D 8 x L 22 / weight 1.3 g

Temperature catheter size: D1.3xL50mm

Measuring range: 25 °C ~ 45 °C, ± 0.2 °C

- Measurement rate 10 seconds/transmission distance \geq 3 meters
- Recording interval 5 minutes/Storage 14 days of data

Mobile app can monitor multiple thermometers at the same time

Send recorded data to the specified network address

3. Instructions for use

-warn!

The validity period is 60 days after leaving the factory. Use it as soon as possible after purchase, and the working time after activation is 2-5 days ! The warranty period of this product is 30 days!

—Install App

TempView application is only applicable to smartphones with Android operating systems. It is not applicable to smartphones with Apple, Hongmeng, and other operating systems. Please download the application from the following address:

① <https://www.fmg-tech.com/oid1745038/Software-Download.htm>

② <https://www.pgyer.com/tempview>

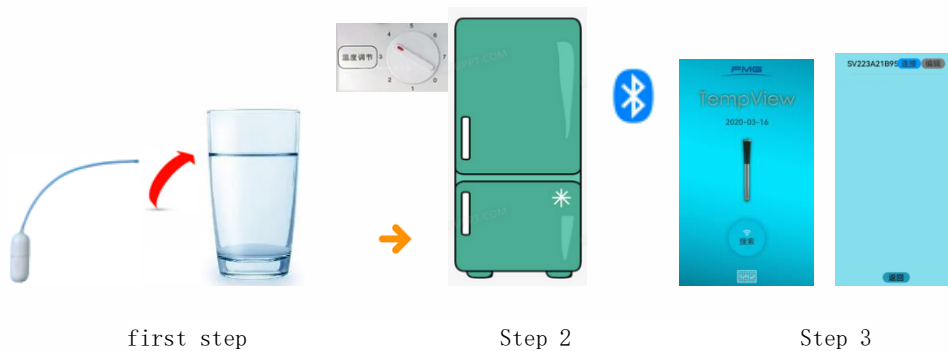
③ Scan the QR code with your phone and download our App TempView from Google Play .



—Activate the thermometer

The thermometer can only be used after activation. Please follow the steps below to activate it:

- ① Adjust the refrigerator compartment temperature switch to level 7 and run it for 2 hours **to keep the compartment temperature within the range of 2° C to 5° C !**
- ② Place the temperature catheter in a 58°C hot water cup for 10 minutes and keep the water temperature $\geq 50^{\circ}\text{C}$.
- ③ When the timer is up, take out the thermometer immediately and put it in the refrigerator's refrigerator compartment, **not in a container.**
- ④ After 15 minutes, the App scans the device and searches for the Bluetooth broadcast of the thermometer, indicating activation. Otherwise, repeat the above steps.



Place the temperature catheter in a hot water cup for 10 minutes Place the thermometer in the refrigerator for 15 minutes Bluetooth broadcast activated

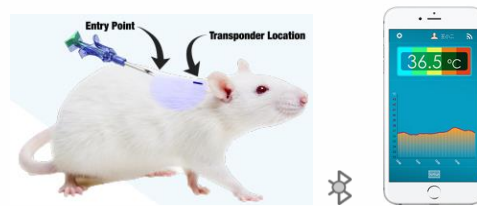
—Measure rectal temperature

Insert the temperature-sensing catheter from the anus to the rectum for more than 3 cm, and fix the capsule to the mouse's tail with masking tape.



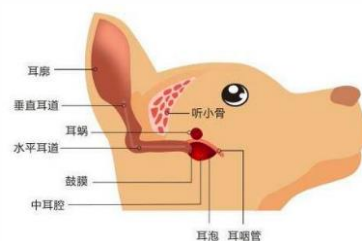
-Measure subcutaneous temperature

Cut off a small amount of hair on the back of the mouse, and use 502 glue to glue the capsule to the back of the mouse. Use a medical needle and syringe to implant the temperature probe under the skin of the mouse's neck, and drip 502 glue on the wound to solidify. For detailed operations, please refer to the attachment.



-Measure ear canal temperature

Cut the hair on the back of the mouse and glue the capsule to the back of the mouse with 502 glue. Insert the temperature catheter into the mouse ear canal, past the vertical bend, close to the eardrum (see the figure below), and drip 502 glue to glue the temperature catheter to the skin of the ear.



— Mouse intraperitoneal temperature measurement

See attachment

—Thermometer off

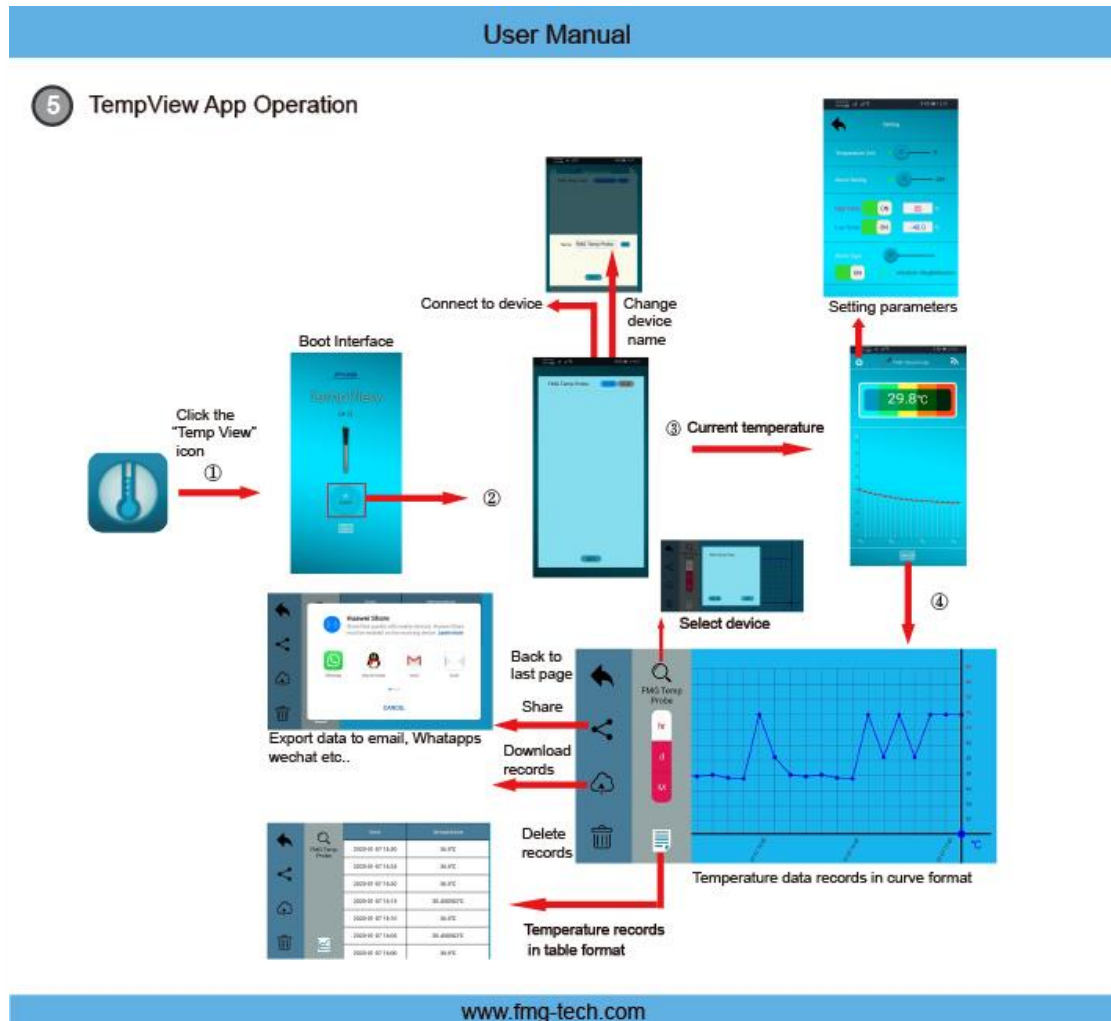
After each use of the thermometer, it is recommended to shut it down and enter low-power standby mode, which can extend the life of the thermometer and reactivate it the next time you use it. The shutdown operation process is as follows:

- ① APP Bluetooth connection thermometer
- ② Place the thermometer in the freezer ($\leq -10^{\circ}\text{C}$)

- ③ When the APP Bluetooth connection is disconnected, it means the thermometer is turned off. Take the thermometer out of the refrigerator.
- ④ Note: Do not keep the thermometer in the freezer for more than 5 minutes.

4. APP operation instructions

—APP Flowchart



—Connection and display




Click to search

Click to connect





Temperature

display

—Setting parameters

Click  the icon in the upper left corner of the screen to set the temperature unit °C / °F , alarm switch, and temperature alarm value.

—Download records

Click  the icon on the right to download the recorded data and save it in your phone; click  the icon to view the temperature record curve and table; click  the icon to send the temperature record table to the designated QQ / WeChat/email/computer. After the download is complete, you can press  the icon to delete the thermometer's historical record data.



6. About FMG

Please visit our website www.fmg-tech.com to learn more about our products. If you have any questions, please contact our customer service: sales@fmg-tech.com , 14714923381.